

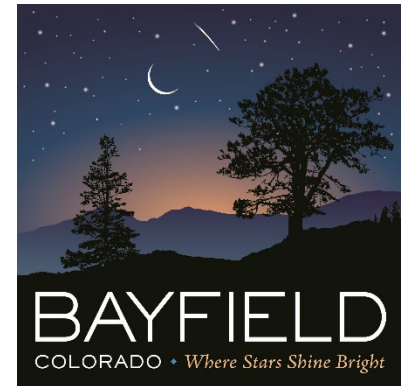
Bayfield Conceptual Park Design

Bayfield Planning Commission

May 9, 2023

Board of Trustees

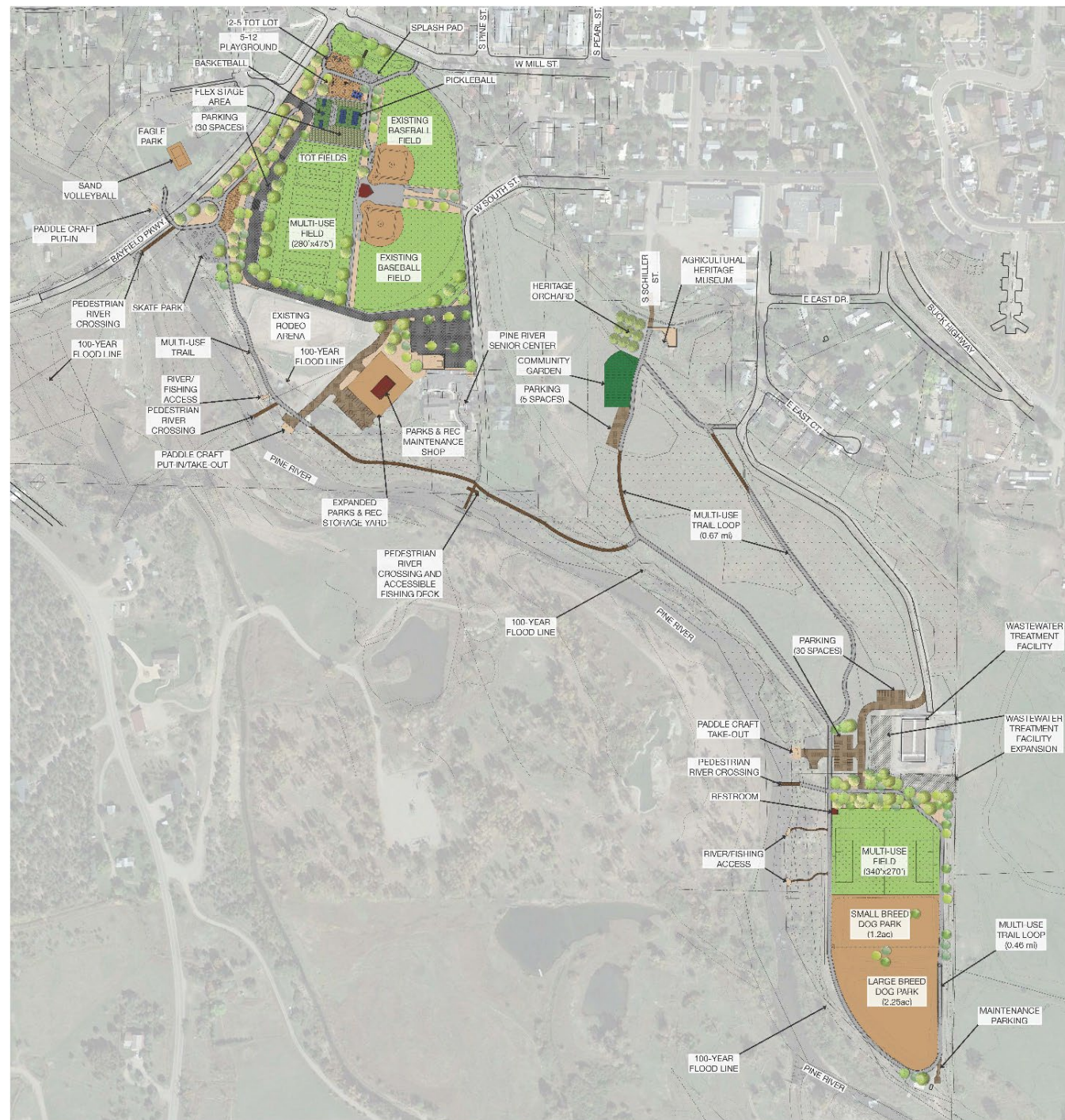
May 16, 2023



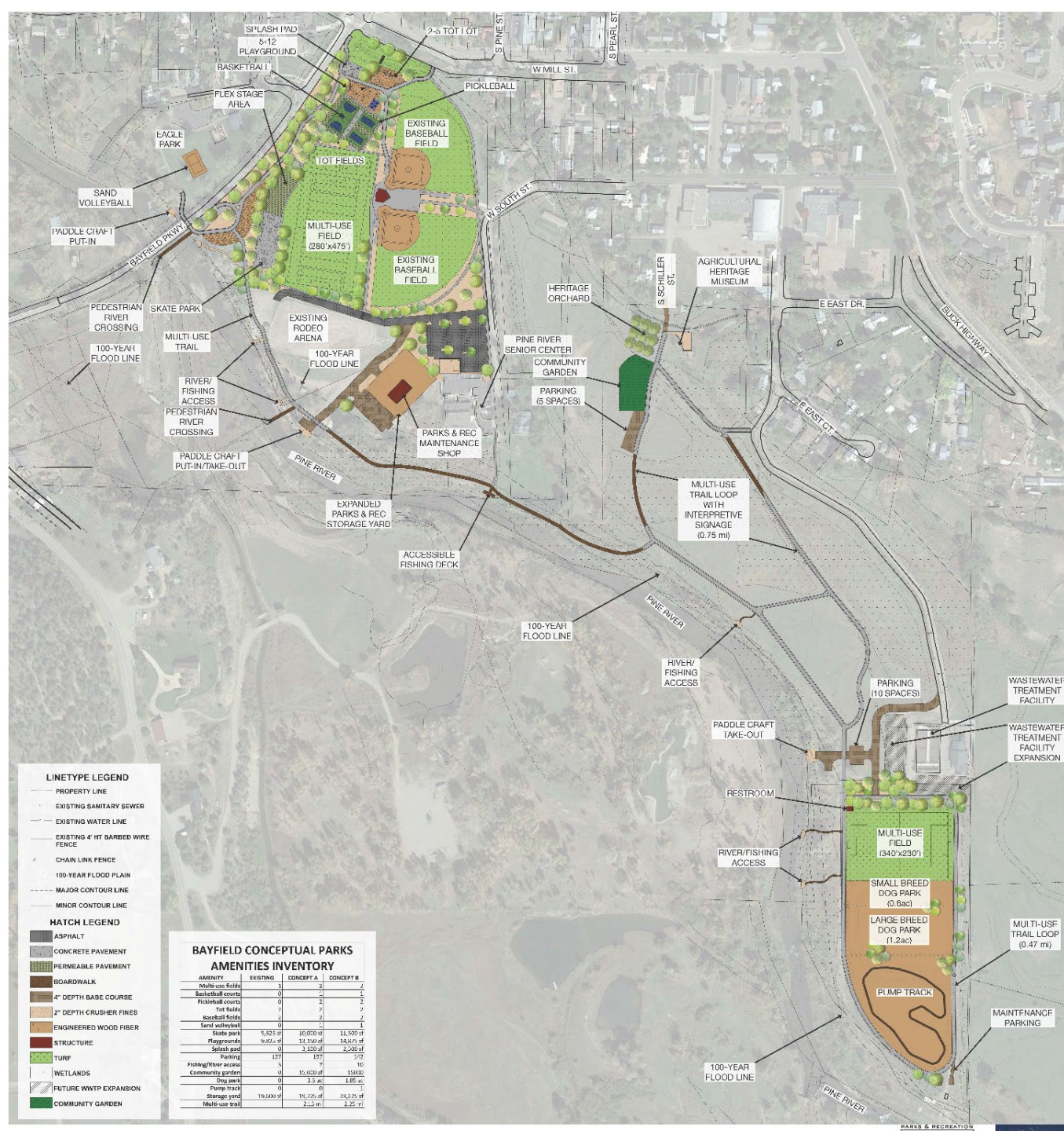
Project Overview

- Began working with Groundwork Studios in November 2022
- Area includes Eagle Park, Joe Stephenson Park, the Pine River Senior Center, 23.8 Acre Riverbank Parcel, and Wastewater Treatment Facility
- Goal is to create a revised plan that leaves the Rodeo Arena in place
- 2 options – A and B – were given to staff to present to the Bayfield community for public input
- Public input was gathered through an online survey from the Town’s website, and in person feedback and survey collection at the Pine River Library, Spring Festival event, and a Public Open House
- We received 369 survey submissions from the community
- Present to PC and BOT’s for input before working with GWS’s on final design
- Taking into account input from community, PC, and BOT’s, staff will work with GWS’s to create a design for final approval
- GWS’s will provide estimates and phasing for the final design
- Staff plans to pursue grant funding for Phase 1 in 2024

Option A:



Option B:



LINETYPE LEGEND

- PROPERTY LINE
- EXISTING SANITARY SEWER
- EXISTING WATER LINE
- EXISTING 4' HT BARBED WIRE FENCE
- CHAIN LINK FENCE
- 100-YEAR FLOOD PLAIN
- MAJOR CONTOUR LINE
- MINOR CONTOUR LINE

HATCH LEGEND

- ASPHALT
- CONCRETE PAVEMENT
- PERMEABLE PAVEMENT
- BOARDWALK
- 4" DEPTH BASE COURSE
- 2" DEPTH CRUSHER FINES
- ENGINEERED WOOD FIBER
- STRUCTURE
- TURF
- WETLANDS
- FUTURE WWTP EXPANSION
- COMMUNITY GARDEN

BAYFIELD CONCEPTUAL PARKS AMENITIES INVENTORY

AMENITY	EXISTING	CONCEPT A	CONCEPT B
Multi-use fields	1	2	2
Basketball courts	0	1	1
Pickleball courts	0	2	2
Tot field	2	2	2
Baseball field	1	2	1
Sand volleyball	0	1	1
Skate park	5,825 sf	10,900 sf	11,500 sf
Playground	14,024 sf	12,100 sf	14,600 sf
Splash pad	0	3,100 sf	2,200 sf
Parking	187	197	510
Fishing/River access	3	7	10
Community garden	0	15,000 sf	15,000
Dog park	0	3.5 ac	1.05 ac
Pump track	0	0	1
Storage yard	19,100 sf	15,275 sf	24,275 sf
Multi-use trail	0	2.25 mi	2.35 mi

Bayfield Conceptual Park Design



Thank you for taking the time (5-10 minutes) to fill out this survey. The town has been provided with two conceptual design options, Concept A and Concept B. Please reference these maps as you complete the survey.

Below is a list of amenities/priorities being considered for inclusion in the conceptual plans for Eagle Park, Joe Stephenson Park, The Pine River Senior Center, the 23.8 acre River Bank Parcel, and the Wastewater Treatment Facility Parcel. The list was generated during the master planning process based on feedback received from the Bayfield community in 2018.

Eagle Park - Rank each amenity/priority on a scale of 1-5, with 5 being the most important.

- River Access (paddle craft, fishing, swimming/wading, etc)
- Improve playground and accessibility
- Sand volleyball court

Please include any additional comments on things you would like to see at Eagle Park that were not mentioned:

Joe Stephenson Park & Senior Center - Rank each amenity/priority on a scale of 1-5, with 5 being the most important.

- | | |
|---|--|
| <input type="checkbox"/> Provide accessible route and fishing access to Pine River from Senior Center | <input type="checkbox"/> Splash pad |
| <input type="checkbox"/> River Access (paddle craft, fishing, swimming/wading, etc) | <input type="checkbox"/> Improve playground facilities |
| <input type="checkbox"/> Multi-use trail (pedestrian/bicycle/equestrian) | <input type="checkbox"/> Pickleball courts |
| <input type="checkbox"/> Additional designated parking | <input type="checkbox"/> Sand volleyball courts |
| <input type="checkbox"/> Direct vehicular access from Bayfield Parkway to South St. and Senior Center | <input type="checkbox"/> Outdoor basketball courts |
| <input type="checkbox"/> Improve existing soccer facilities | <input type="checkbox"/> Gathering space (tables, grills, shade, etc.) |
| <input type="checkbox"/> Improve existing baseball/softball facilities | <input type="checkbox"/> Improve skate park facilities |
| <input type="checkbox"/> Additional multi-use fields | <input type="checkbox"/> Stage and area for hosting entertainment/events |

Please include any additional comments on things you would like to see at Joe Stephenson Park and the Senior Center that were not mentioned:

23.8 Acre Riverbank Parcel - Rank each amenity/priority on a scale of 1-5, with 5 being the most important.

- River Access (paddle craft, fishing, swimming/wading, etc)
- Multi-use trail (pedestrian/bicycle/equestrian)
- Wildlife viewing/bird watching
- Community garden/farm
- Agricultural heritage museum

Please include any additional comments on things you would like to see at the 23.8 Acre Riverbank Parcel that were not mentioned:

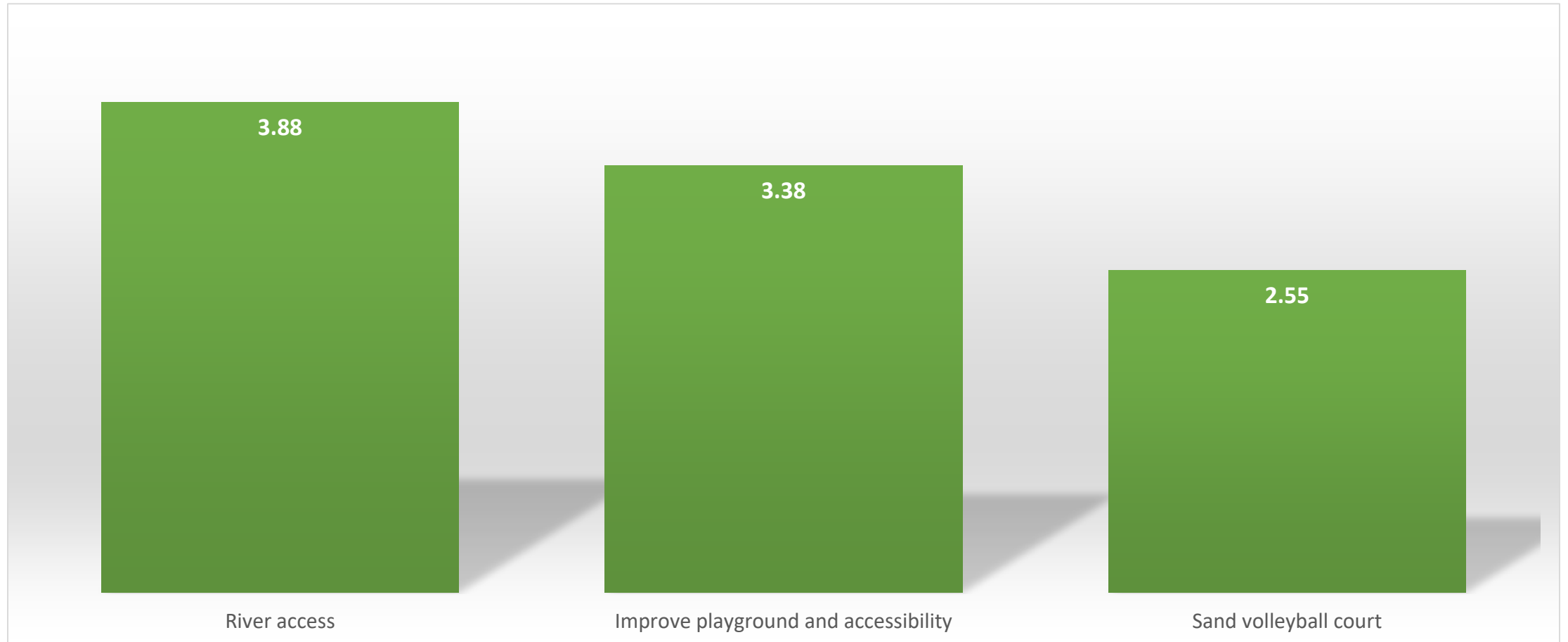
Wastewater Treatment Facility Parcel - Rank each amenity/priority on a scale of 1-5, with 5 being the most important.

- River Access (paddle craft, fishing, swimming/wading, etc)
- Additional multi-use fields
- Small and large breed dog parks
- Pump track
- Wildlife viewing/bird watching
- Multi-use trail (pedestrian/bicycle/equestrian)

Please include any additional comments on things you would like to see at the Wastewater Treatment Facility Parcel that were not mentioned:

Additional Overall Comments:

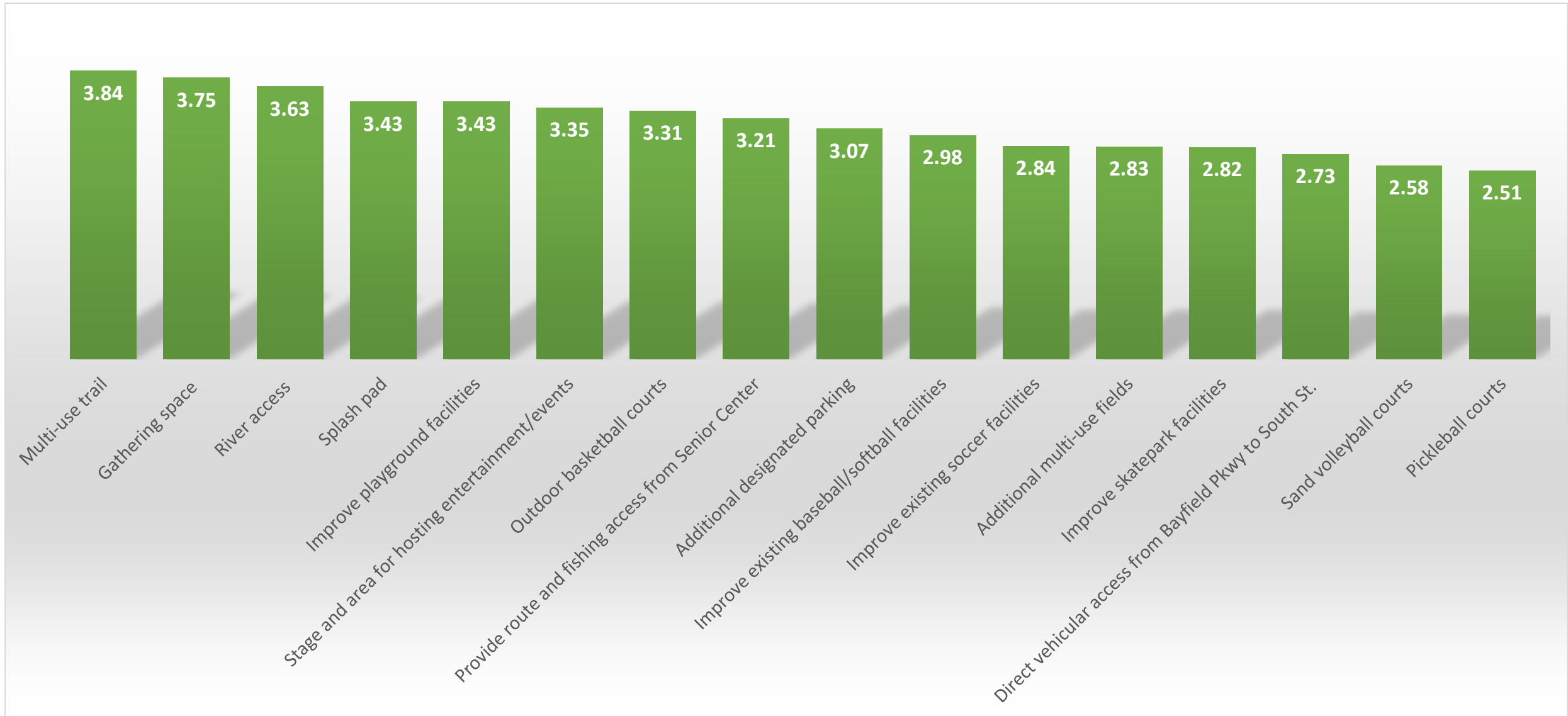
Eagle Park proposed amenities/priorities (based on a scale of 1-5, with 5 being most important)



Eagle Park – Write In Comments

- Better ADA accessibility/improved playground - 7
- Better river access - 6
- More walking paths along river - 4
- More parking - 4
- It's great the way it is, please leave the trees, open grass area, pavilion - 4
- Swings - 3
- No sand volleyball court - 3
- Year round restrooms - 2
- Splash pad - 2
- Pickleball courts with lights - 2
- Disc golf course - 2
- Covered stage for performances - 2
- Basketball court with lights - 2

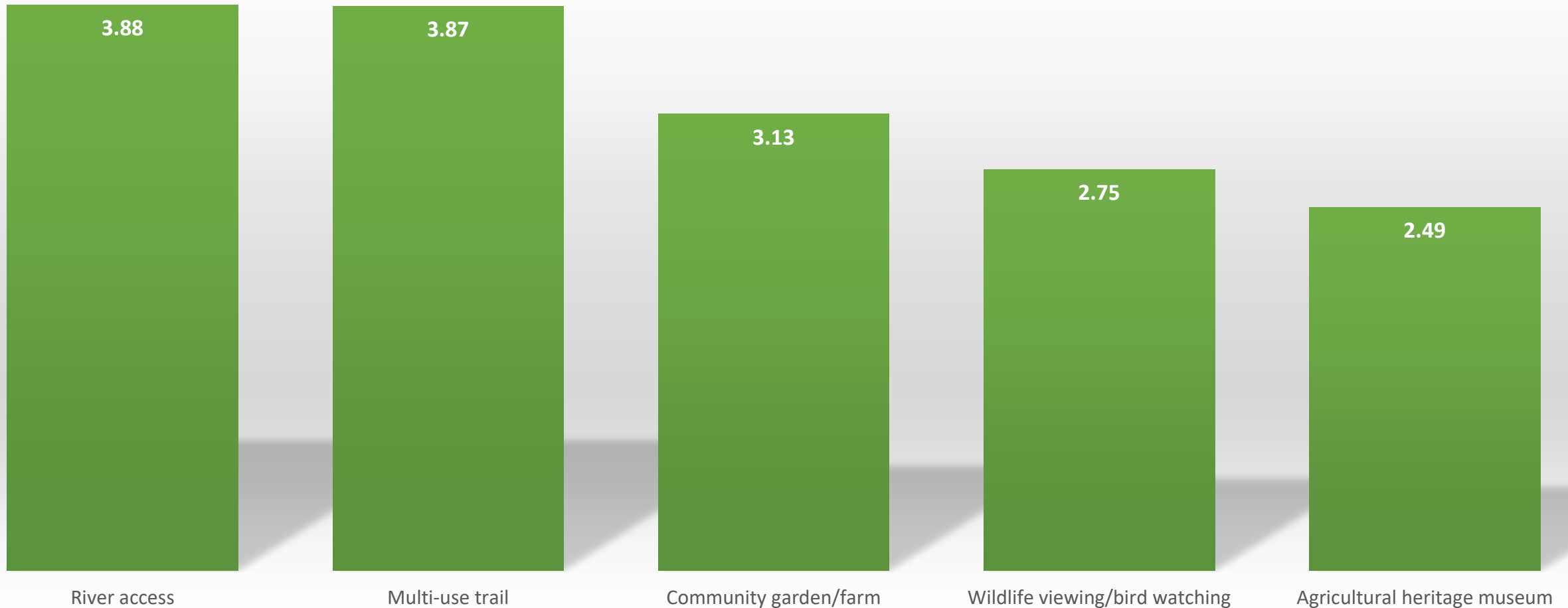
Joe Stephenson Park and Senior Center proposed amenities/priorities (based on a scale of 1-5, with 5 being most important)



Joe Stephenson Park & Senior Center – Write In Comments

- Better ADA accessibility/improved playground - 6
- Improved skate park - 5
- Multi-use trails/Better trail connectivity - 5
- More shade (trees) - 4
- Splash pad - 3
- Stage for events - 3
- Year round, improved restroom facilities - 3
- More swings - 2
- More batting cages and baseball training equipment - 2
- Improved baseball/softball fields - 2
- Basketball court - 2
- Improve soccer field - 2

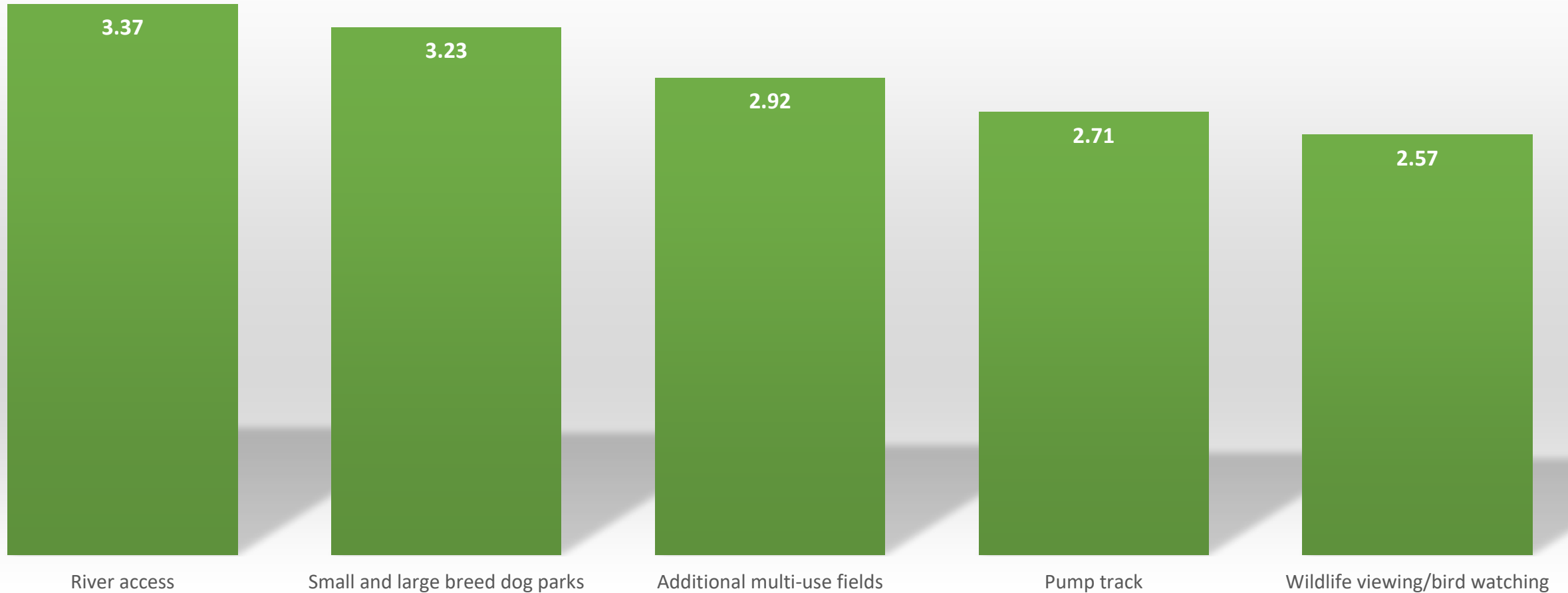
23.8 Acre Riverbank Parcel proposed amenities/priorities (based on a scale of 1-5, with 5 being most important)



23.8 Acre Riverbank Parcel – Write In Comments

- Multi-use trails and trail connectivity - 3
- Disc golf - 3
- Community garden not needed, already have one at library and PRS - 2
- Community garden - 2

Wastewater Treatment Facility Parcel proposed amenities/priorities (based on a scale of 1-5, with 5 being most important)



Wastewater Treatment Facility Parcel – Write In Comments

- Dog Park - 5
- Pump track: alternative to traditional sports - 3
- More parking to allocate for all of the different uses - 3

Overall Additional Comments

- River access - 6
- Prefer Option B - 5
- Trail connectivity - 4
- Dog park - 4
- I think access from Bayfield Parkway to the parking facilities at Joe Stephenson Park and the senior center is a must - 3
- Splash pad - 3
- Improve skate park - 3
- Improve playground accessibility for kids with disabilities. Fall surface other than wood chips or sand - 2
- More bicycle options: trails, pump tracks, dirt jumps, would be great! - 2
- Build something like Yamaguchi Park in Pagosa Springs - 2

What Have We Learned?

- The community cares about Parks & Recreation, and they are ready to support new improvements
- We've confirmed what we learned in 2018 (still popular):
 - River access
 - Multi-use trails and connectivity
 - Improved playgrounds and ADA accessibility
 - Gathering space (tables, shade, BBQ grills, etc.)
- New and popular in 2023
 - Splash pad
 - Stage for hosting events and entertainment
 - Dog park
- Explore other multi-use parks in the area for design ideas; Durango, Pagosa, Ignacio, etc.
- The community had valuable input that should be considered/implemented for the final design
 - Adequate parking needed for multiple uses
 - Providing alternatives to traditional sports (pump track, improved skate park, disc golf, etc.)
 - More trees and shade
- Sport specific areas (basketball, volleyball, and pickleball) scored about the same; variety will be key

Staff Recommendations

- Direct vehicular access from Bayfield Parkway into Joe Stephenson Park will improve access for programs, events, Senior Center and lessen the traffic impact on South St.
- ADA accessibility should be at the forefront of design.
- River access and trail connectivity should be highly prioritized.
- Improvements to existing parks and facilities, *and* the addition of new features are needed.
- Provide alternatives to traditional sports.
- With expected population growth, multi-use field space must be adequate for programming.