

Future Land Use Map

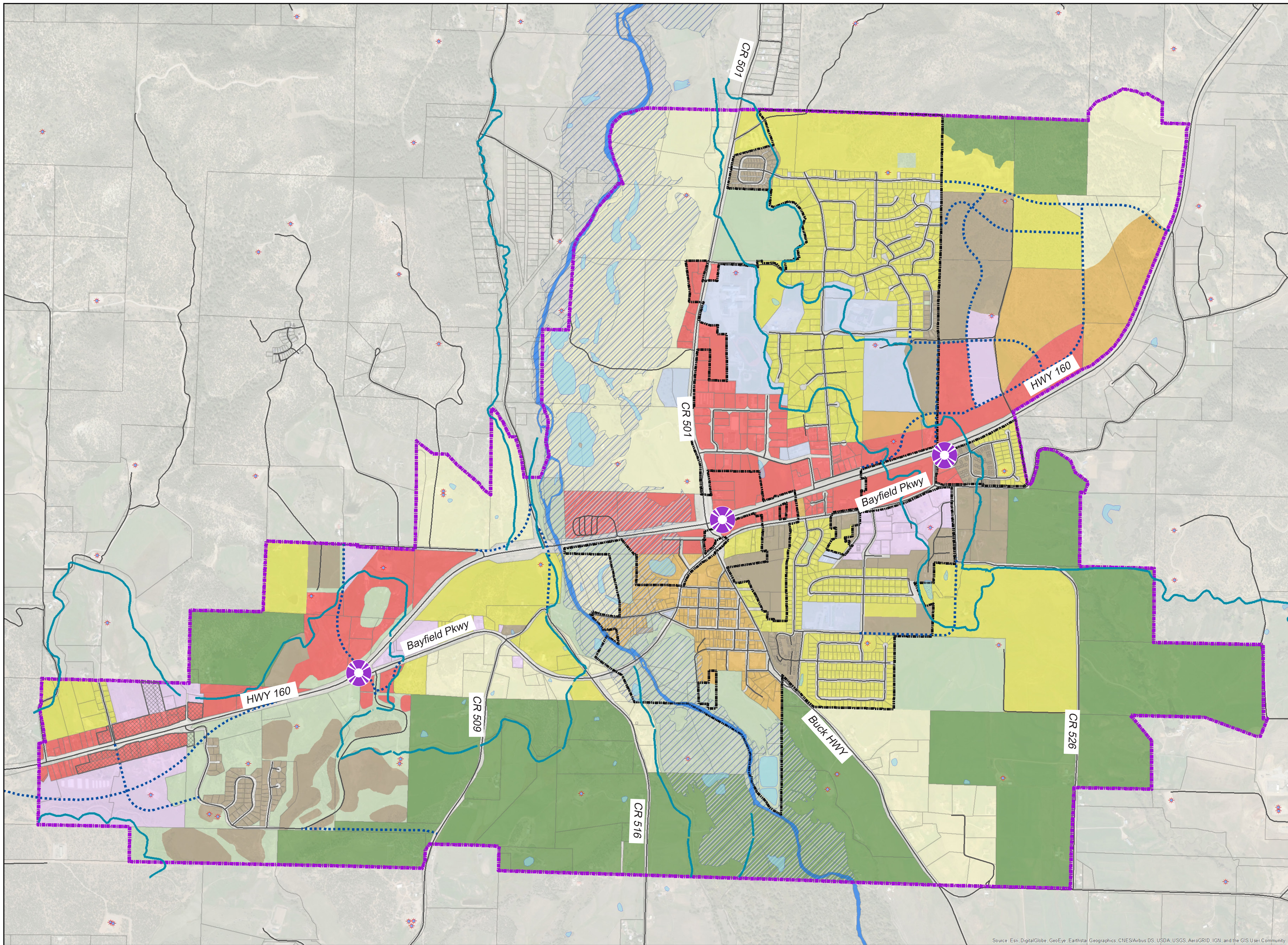
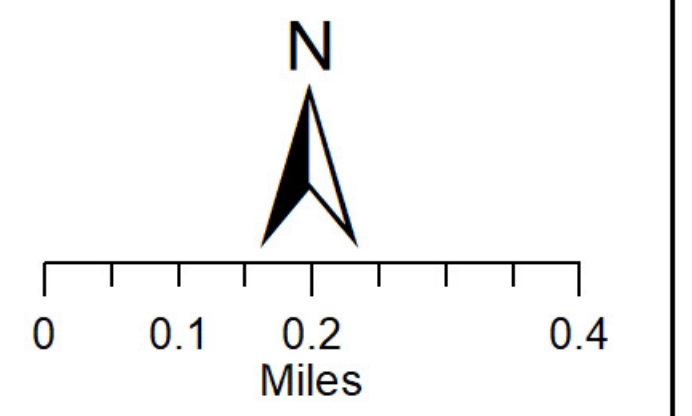
This map is a general representation of the future land use patterns and classifications.

This map was adopted by the Town of Bayfield Planning Commission on May 8, 2018 and the Board of Trustees on May 15, 2018.

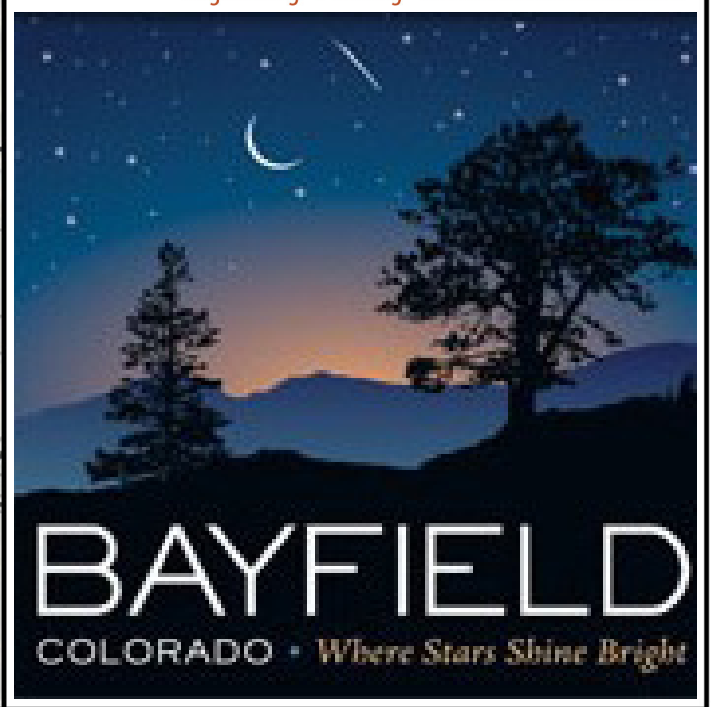
- Primary Gateway and Median Enhancements
- Future Growth Boundary
- Current Town Limits
- 100 year Floodplain
- Permitted Wells
- Future Roads
- Irrigation Ditch
- Roads

Future Land Use Classifications:

- Employment / Light Industrial
- General Commercial
- Mixed Use
- High Density Residential
- Medium Density Residential
- Low Density Residential
- Rural Agriculture
- Open Space / Parks
- Community Service
- GemVillage Overlay



RG AND ASSOCIATES, LLC
Engineering • Planning • Construction Administration



Source: Esri, DigitalGlobe, GeoEye, Earthstar Geographics, CNES/Airbus DS, USDA, USGS, AeroGRID, IGN, and the GIS User Community